

# Project Overview

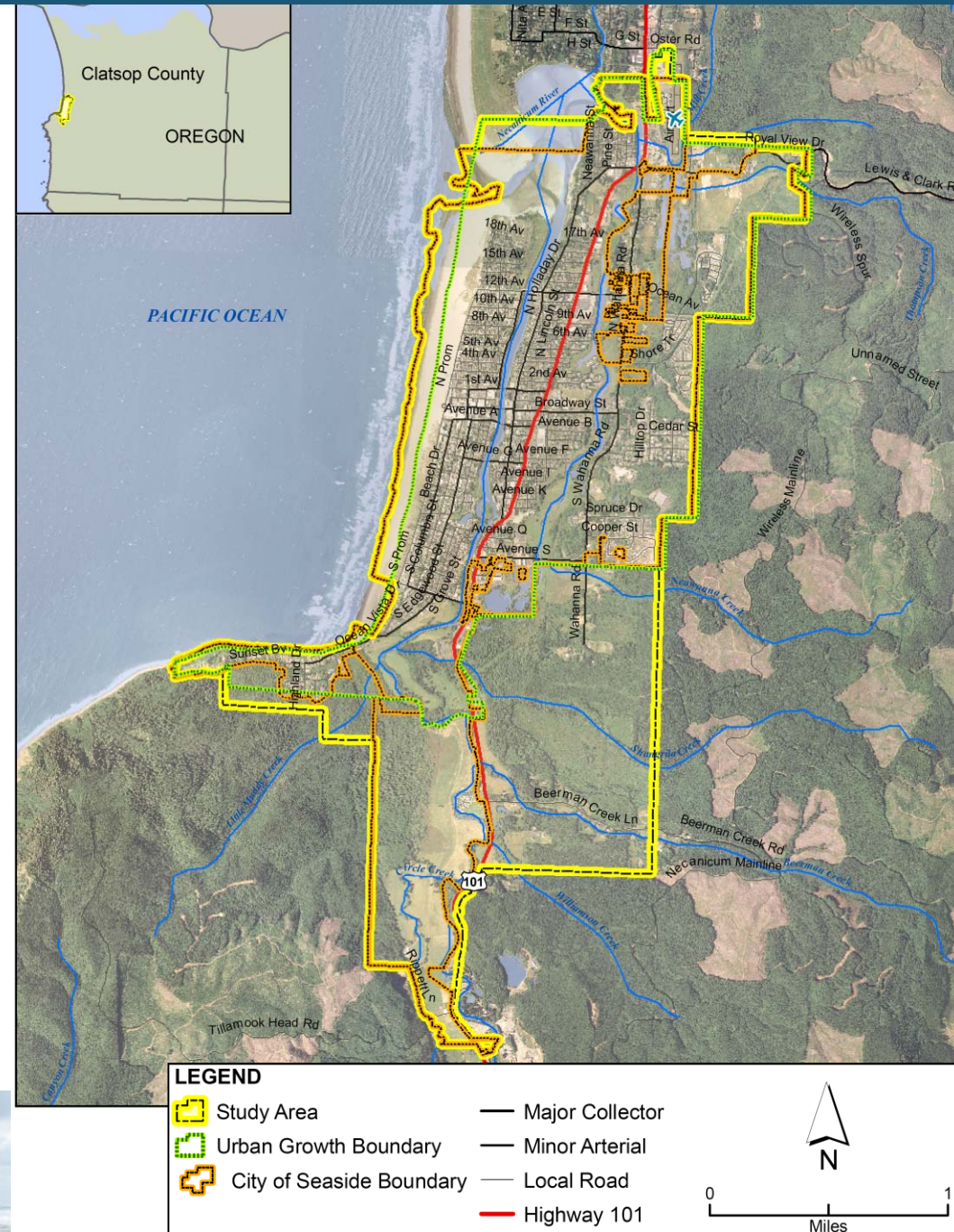
The **Seaside TSP** recommends transportation improvements needed to address **current** (2008) **and future** (2030) **needs** of residents, businesses, and visitors.

The TSP **includes improvements to all modes** of transportation in Seaside, including:

- Local and State **Roads**
- **Bicycle** Facilities
- **Pedestrian** Facilities
- **Transit** Facilities
- **Rail** Facilities and the **Airport**



# Study Area



# Who is Involved?

- City of Seaside
- Oregon Department of Transportation (ODOT)
- Clatsop County
- Department of Land Conservation and Development (DLCD)
- You, the community

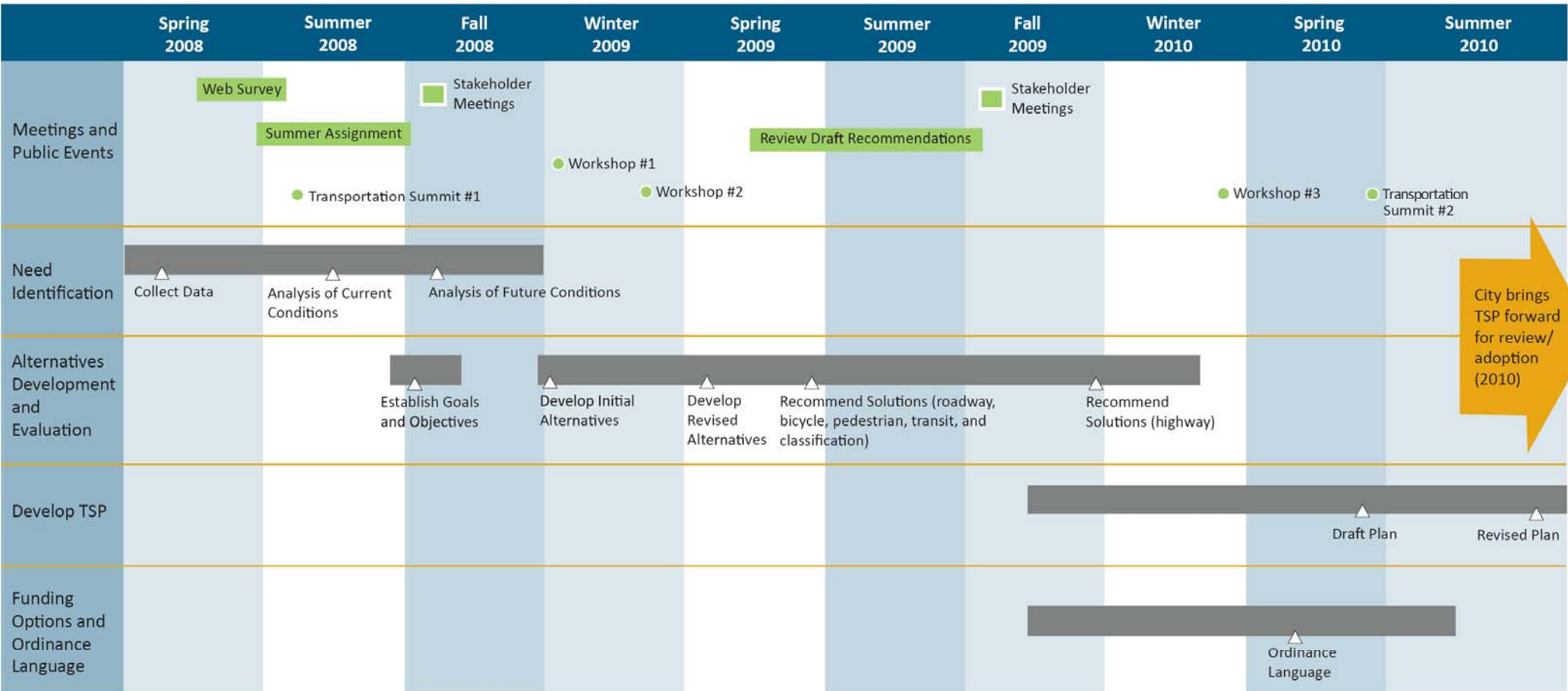


- Get involved today!

*Please fill out a comment form*



# Project Timeline



City brings TSP forward for review/adoption (2010)

Last updated: June 2010  
PMT = Project Management Team

# Deficiencies Identified

- US 101 is **congested**, especially on summer weekends
- Gaps in **pedestrian and bicycle network** (especially at river and creek crossings)
- Difficulty **crossing US 101** - both as a pedestrian and in a vehicle
- Intersection **safety**
- More **transit service** is desired (including facilities and days/hours of service)



# Evaluation Criteria

Criteria	Explanation
<b>Safety for all modes</b>	Address safety issues for automobiles, bikes, and pedestrians at known problem areas
<b>Access for all modes</b>	Provide clear and easy evacuation routes; move toward ODOT access standards; plan for emergency vehicle access
<b>Mobility</b>	Plan for future growth; address regional and local travel needs of residents, businesses, & industries
<b>Connectivity</b>	Improve east-west streets; provide local alternative to Hwy 101; improve bike/pedestrian connections; regional and local transit system
<b>Cost</b>	Benefits outweigh the costs; cost effective over lifespan of improvements; identify funding options
<b>Livability</b>	Preserve current parking and viability of businesses; plan should support the community's idea of future growth and development;
<b>Environmental Resources</b>	Minimize impacts to the built environment, fish habitats, floodplains, and wetlands